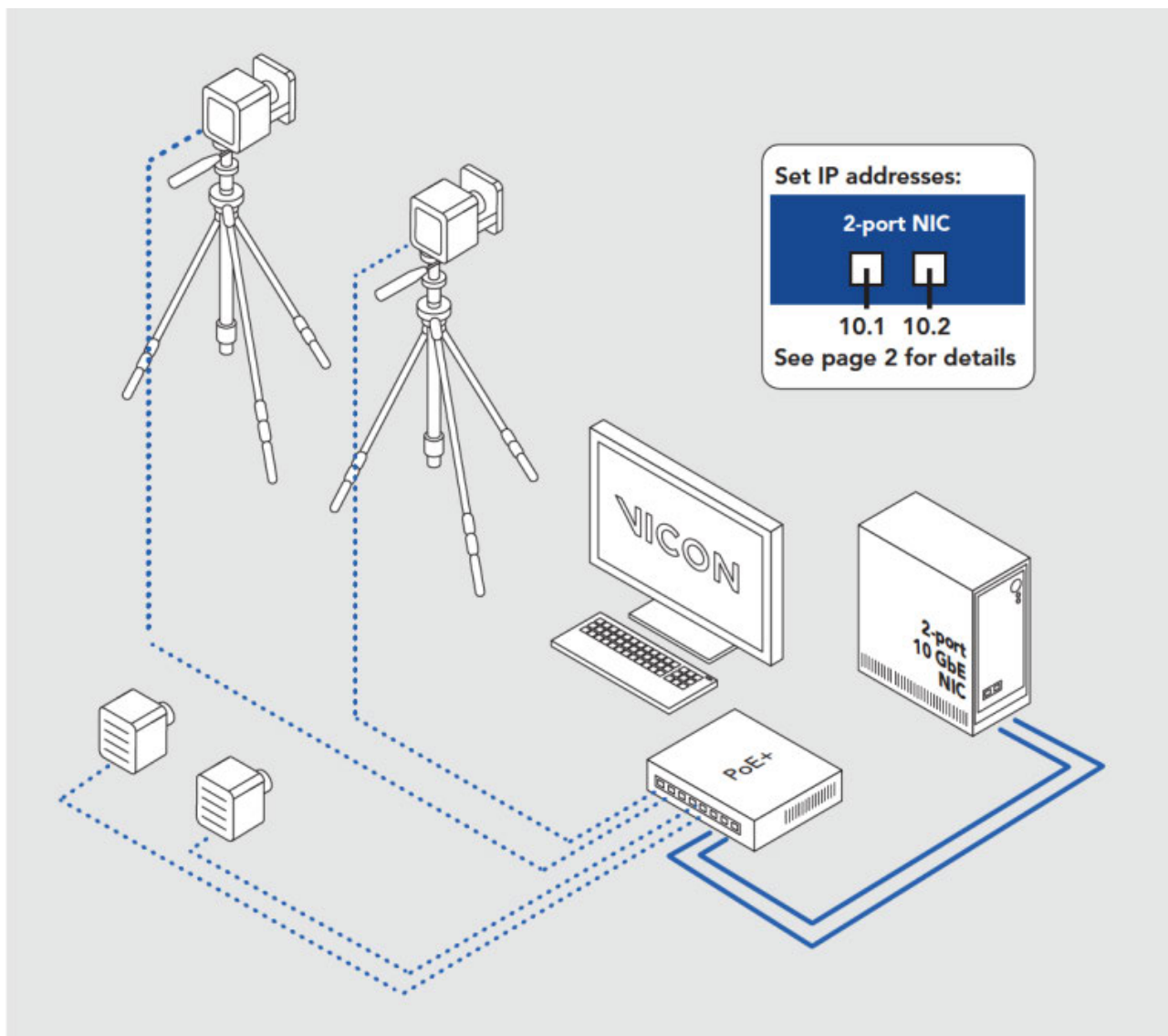



# V u e

## QUICK START GUIDE

HARDWARE / Mount. Cables. Connect.



For easy system setup, use the Vicon Control app 

See [vicon.com/products/software/vicon-control](https://vicon.com/products/software/vicon-control).

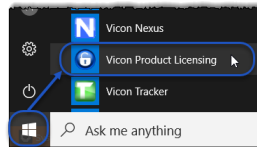
## SOFTWARE / Download. Install. License.

1 [www.vicon.com/downloads](http://www.vicon.com/downloads) (supported from: Vicon Nexus 2.4 and Vicon Shogun 1.0)

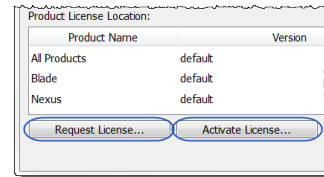


2 Run SETUP.EXE.

3 Click Start, then Vicon Product Licensing.



4 Request a license, save it to a suitable location and activate.



For details on installing and licensing, see your Vicon software documentation.

## SYSTEM / Administrator. IP address. Adapter settings.

Important: Ensure you are logged on as Administrator.

1 Open the Network Connections window.

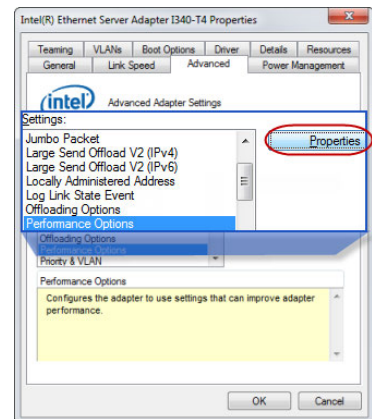
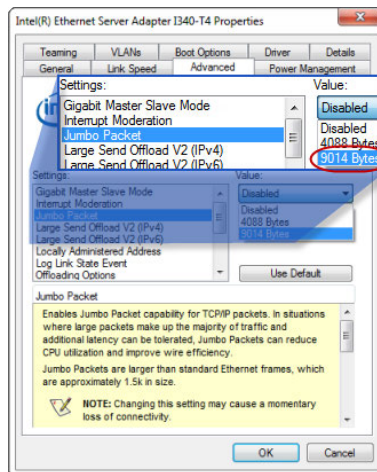
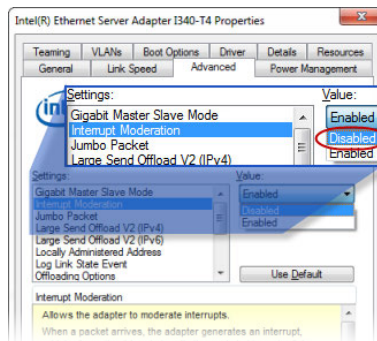
2 Right-click on the network port that connects to the PoE switch and click Properties.

3 In the Properties dialog box, click Configure and then the Advanced tab.

4 In the Settings list, ensure the values shown (in the images on the right and the first two columns on page 3) are selected, then click OK to close the dialog box.

5 Repeat step 2 to re-open the Properties dialog box.

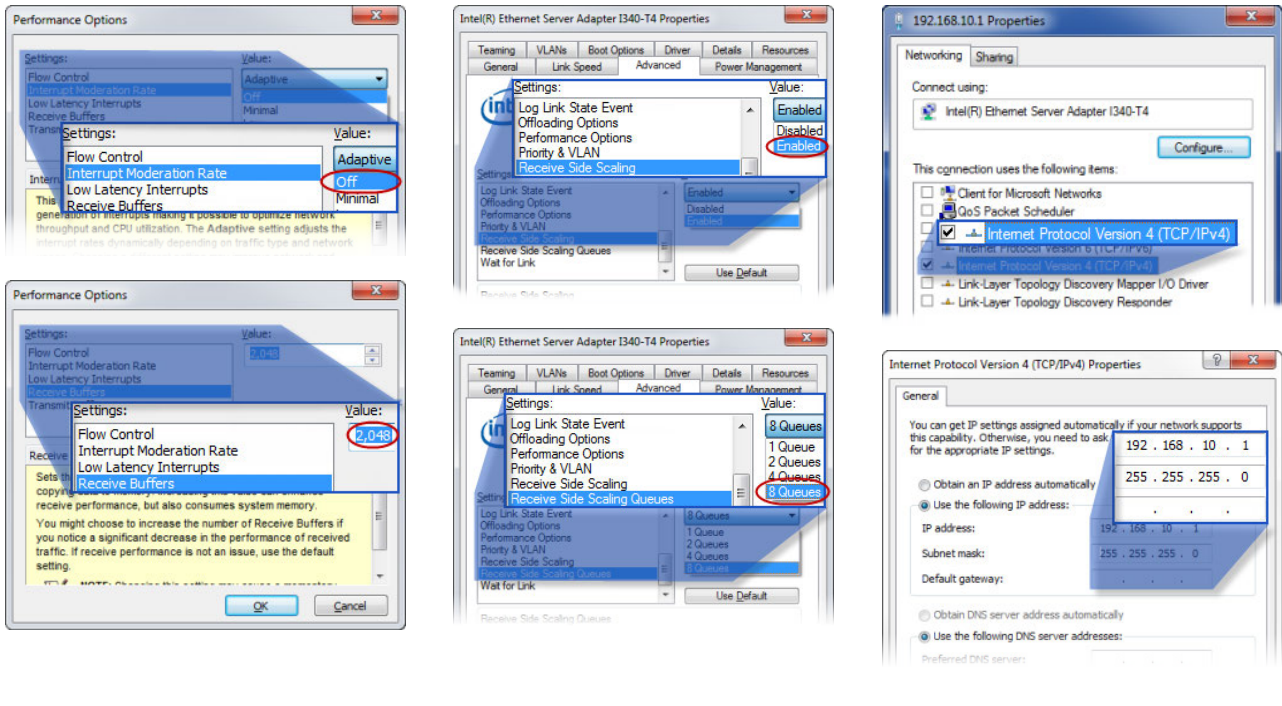
6 Ensure only Internet Protocol Version 4 is checked (see page 3, last column) and click the Properties button.



7 Specify the IP address 192.168.10.2 for the video network port and specify subnet mask 255.255.255.0 (see page 3, last column) and click OK.

For detailed guidance on system setup, visit [Vicon system setup information](#) or download the Vicon PDF, *PC Setup for Vicon systems* from the same page.

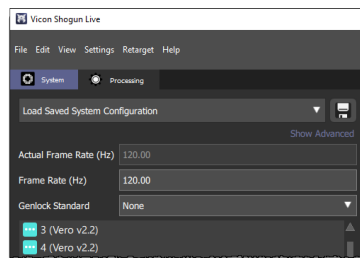
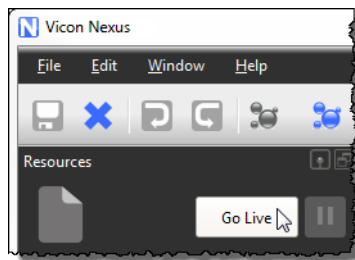
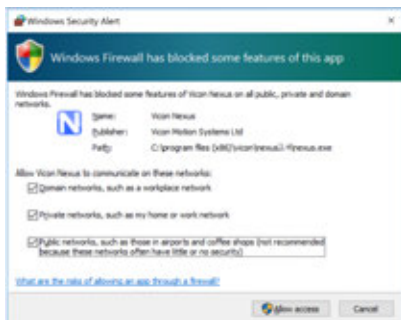
## SYSTEM (cont.) / Administrator. IP address. Adapter settings.



## RUN / Start software. Unblock firewall. Connect.



1 After you start your Vicon software, ensure that it is not blocked by a firewall and that it shows the system is live.



2 In the System Resources panel (or in Shogun, the System panel) select a camera.

3 In the View pane, change to Camera view.

You can now set the camera focus and aperture.

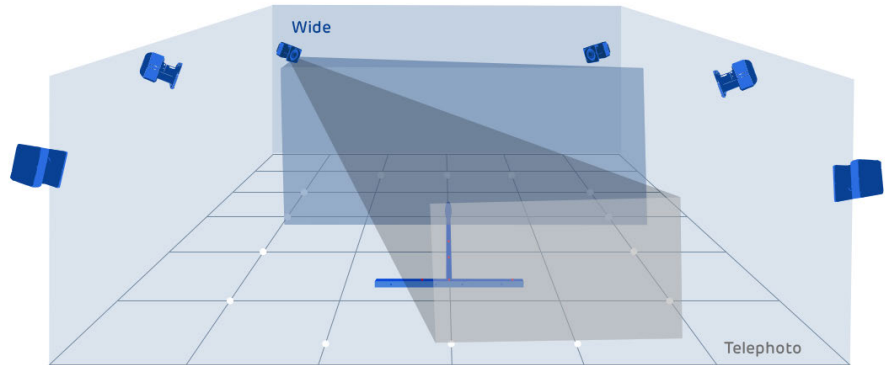
⚠ About anti-virus software: If possible, avoid running anti-virus software while capturing. Alternatively, configure it to allow the relevant file types. For more information, contact [Vicon Support](#).

# Vue

## QUICK START GUIDE

### ADJUST / Zoom. Grayscale. Focus.

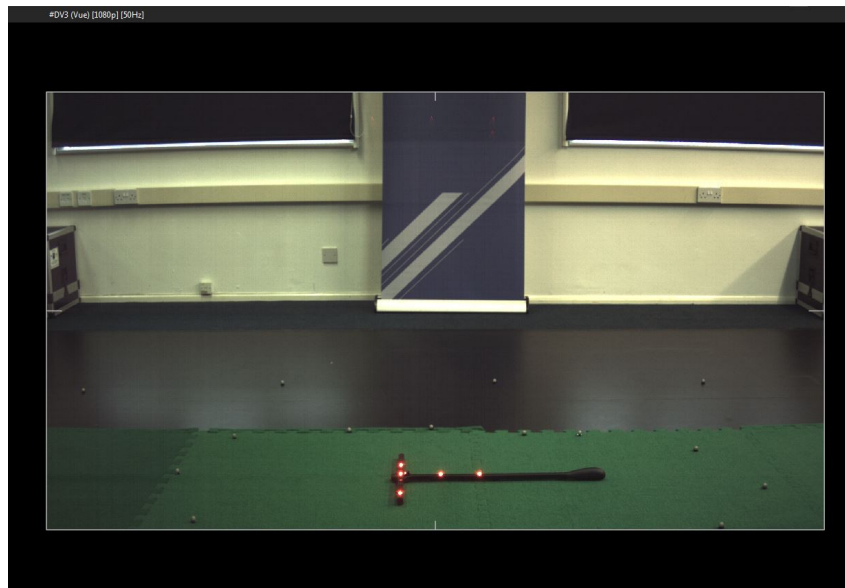
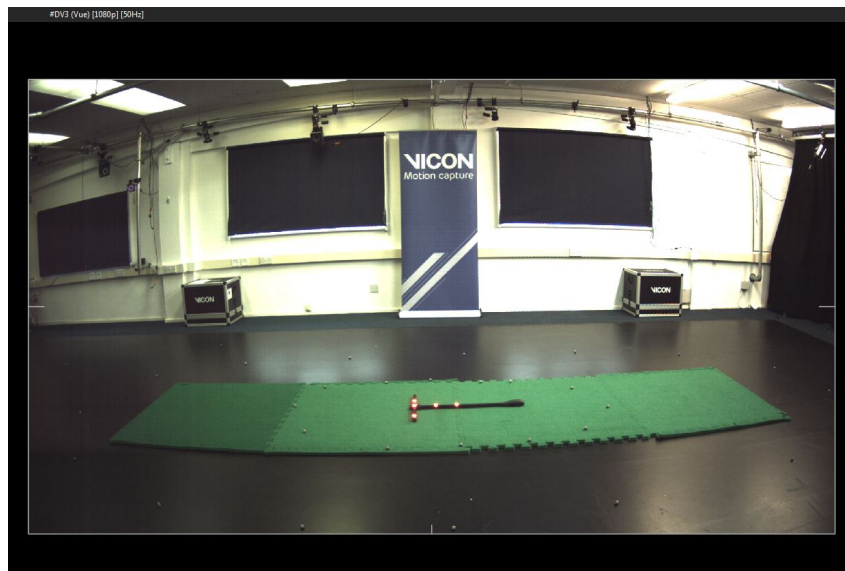
Focal length  
W(ide)      Focal length  
T(elephoto)



The image on the right shows a view through a Vicon Vue camera set to Wide.

The bottom image shows a view through a Vicon Vue camera set to Telephoto.

✓ For more help: Visit [vicon.com/support/faqs](https://vicon.com/support/faqs).



⚠ **Warning**  
Under normal operation in elevated ambient conditions, the camera's heat sink temperature can exceed 56°C. During and after camera operation, *do not touch the heat sink for longer than 1 second.*

## Vicon Vue regulatory and safety information

These topics provide information on how Vicon Vero complies with regulatory standards, including product recycling. The [certification](#) that Vero has achieved for meeting stated international standards.

- [Radio and television interference \(US and Canadian customers\)](#)
- [Environmental regulations \(EU customers\)](#)

## Radio and television interference (US and Canadian customers)

This topic contains information concerning compliance with regulations of radio and television interference.

### For United States of America customers

#### Federal Communications Commission (FCC) Part 15 Information

**FC** This equipment has been tested and found to comply with the limits for a Class A digital device, pursuant to Part 15 of the FCC Rules (CFR 47:Part 15:B:2013). These limits are designed to provide reasonable protection against harmful interference when the equipment is operated in a commercial environment. This equipment generates, uses, and can radiate radio frequency energy and, if not installed and used in accordance with the instruction manual, may cause harmful interference to radio communications. Operation of this equipment in a residential area is likely to cause harmful interference, in which case the user will be required to correct the interference at his own expense.

Properly shielded and grounded cables and connectors must be used in order to meet FCC emission limits. Vicon Motion Systems Ltd is not responsible for any radio or television interference caused by using other than recommended cables and connectors or by unauthorized changes or modifications to this equipment. Unauthorized changes or modifications could void the user's authority to operate the equipment.

This device complies with Part 15 of the FCC rules. Operation is subject to the following two conditions: (1) this device may not cause harmful interference, and (2) this device must accept any interference received, including interference that may cause undesired operation.

### For Canadian customers

#### Conformity to the Canadian Interference-Causing Equipment Regulations

This Class A digital apparatus meets the requirements of the Canadian Interference-Causing Equipment Regulations ICES-003:2004.

#### Avis de conformité à la réglementation d'Industrie Canada

Cet appareil numérique de la classe A respecte toutes les exigences du Règlement sur le matériel brouilleur du Canada ICES-003:2004.

## Environmental regulations (EU customers)

### Restriction of the use of certain hazardous substances in electrical and electronic equipment – RoHS and recast (RoHS 2)

This equipment is fully RoHS- and RoHS 2- compliant. RoHS Directive 2002/95/EC provides that new electrical and electronic equipment put on the market for the first time from 1<sup>st</sup> July 2006 should not contain lead, cadmium, mercury, hexavalent chromium, polybrominated biphenyls (PBB), or polybrominated diphenyl ethers (PBDE). The European Union Directive 2011/65/EU provides that new electrical and electronic equipment put on the market for the first time from 3<sup>rd</sup> January 2014 shall not contain more than permitted levels of lead, cadmium, mercury, hexavalent chromium, polybrominated biphenyls (PBB), or polybrominated diphenyl ethers (PBDE; PentaBDE, OctaBDE; DecaBDE), Mercury (Hg).

### REACH Declaration of Conformity

Vicon Motion Systems Ltd is a manufacturer of electronic hardware. We are therefore considered a "downstream user" as far as the REACH document is concerned. Vicon Motion Systems Ltd is therefore not obligated to register with the European Agency for Chemicals 'ECHA'.

Products sold by Vicon Motion Systems Ltd are "articles" as defined in REACH (Article 3 Definitions). Moreover and under normal and reasonably foreseeable circumstances of application, the articles supplied shall not release any substance. For that, Vicon Motion Systems Ltd is neither obligatory for registration nor for the creation of material safety data sheets.

In order to assure our customers of the continual supply of reliable and safe products, we ensure that our suppliers fulfill all requirements regarding chemical substances and prepared materials.

## Waste Electrical and Electronic Equipment (WEEE)

(Applicable in the European Union and other European countries with separate collection systems)



The use of the symbol as a marking on the equipment, accessories or literature indicates that this product and its electronic accessories (e.g. USB cable) may not be treated as household waste. By ensuring this product is disposed of correctly, you will help prevent potential negative consequences for the environment and human health, which could otherwise be caused by inappropriate waste handling of this product. Household users should contact either the retailer where they purchased this device, or their local government office, for details of where and how they can take these items for environmentally safe recycling. Business users should contact their supplier and check the terms and conditions of the purchasing contract. This device and its electronic accessories should not be mixed with other commercial waste for disposal.

## EU Declaration of Conformity - Vicon Vue



### Declaration of Conformity

Medical Devices Directive 93/42/EEC as amended by  
EU Council Directive 2007/47/EC of 5th September 2007  
Electromagnetic Compatibility to EMC Directive 2014/30/EU  
Electrical Safety to Low Voltage Directive 2014/35/EU.

We, Vicon Motion Systems Limited  
Unit 6, Oxford Industrial Park  
Mead Road, Yarnton, Oxford, OX5 1QU  
UNITED KINGDOM

declare that the Vue Video Camera as part of a Vicon Vantage or Vero Gait Analysis System manufactured by VICON MOTION SYSTEMS LIMITED in that the Quality Management System has been approved by BSI Assurance UK Ltd for the manufacture and support of the aforementioned CLASS 1 Medical device.

This declaration of conformity is issued under the sole responsibility of the manufacturer.

VICON MOTION SYSTEMS LIMITED has tested and demonstrated that all products of its own manufacture meet 2014/30/EU:

Electromagnetic Compatibility to:  
EN60601-1-2:2007

General Requirements for Safety to:  
EN60601-1:2006 + A12:2014

Software Development, Conformity and Support  
EN ISO 13485:2016  
EN ISO 14971:2019  
BS EN 62304:2006 + A1:2015, IEC 62304:2006/A1:2015

Thomas Shannon, TD PhD FIE (Aust), CPEng (Biomed.)  
Director of Compliance

17<sup>th</sup> March 2021

Date of Expiration Validity of the MD727611 Certificate

Not for use in an operating theater, anesthetic gas environment, or oxygen-rich environments. Not for use where there is a risk of compromising the essential performance of medical electrical equipment. Not suitable for use in high magnetic flux, ionizing radiation, dust ingress, high vibration, sterile, or life- or safety-critical environments.

**Note:** The overall installed system classification is defined by the highest risk device connected, which may include the connection of approved third-party equipment such as electromyography apparatus by clients.

 **About your Vicon camera packaging**

The box in which your new Vue camera arrived has a foam insert that holds the camera. This insert prevents most damage that could be caused during shipping. We recommend that you retain this box as it provides the most convenient and safe way to ship your camera in future.

**Contact Vicon:**

Denver, CO  
Vicon Denver  
7388 S. Revere Parkway  
Suite 901, Centennial  
CO 80112, USA  
T: 303.799.8686  
F: 303.799.8690  
E: [support@vicon.com](mailto:support@vicon.com)

Los Angeles, CA  
Vicon LA  
3750 S. Robertson Boulevard  
Suite 100, Culver City, Los Angeles  
CA 90232, USA  
T: 310.437.4499  
E: [support@vicon.com](mailto:support@vicon.com)

Oxford, UK  
Vicon Oxford  
Unit 6, Oxford Industrial Park  
Mead Rd, Yarnton, Oxford  
OX5 1QU, United Kingdom  
T: +44.1865.261800  
E: [support@vicon.com](mailto:support@vicon.com)

© Copyright 2021 Vicon Motion Systems. All rights reserved.



Vicon trademarks